



Doctor Appointment

Ayushi Nanda¹, HK Madhu²

¹Student, Department of MCA, Bangalore Institute of Technology, Bangalore, Karnataka, India.

²Professor, Department of MCA, Bangalore Institute of Technology, Bangalore, Karnataka, India.

Abstract: The Propound undertaking is medical doctor appointment that offers patients or anyone consumer and clean manner of reserving a physician's appointment on-line. that is a web primarily based on online platform that overcomes the difficulty of coping with reserving appointments in keeping with person's preference or needs. The challenge someday emerges as monotonous for the staff or medical doctor themselves in physically shelling out appointments for the customers as constant with their availability. As a result, this venture gives an effective answer wherein consumer can view numerous booking slots to be had select the popular date and time. The booked location will be already marked yellow and couldn't be to be had anybody favored time.

This machine additionally gives patient to cancel their reserving every time. The machine affords a further function of calculating month-to-month income of doctor. Medical has to simply feed the machine regularly with every day earnings and the system routinely generates a file of total amount earned at the stop of the month. The software uses Asp.net as a frontend and square database due to the fact the back-cess

In preceding years internet has been used for lots advantages of society. this text is about using the android application & internet for betterment of affected person. the primary cause is to provide patient a trouble loose surroundings and luxury for the patient while touring the medical doctor. as the patient must watch for a long time for appointments, despite the fact that they get the appointment, every now and then the doctor does no longer go to the sanatorium and the affected person leaves without visiting and the appointment receives canceled. by using the usage of technology like android & web primarily based application the difficulty will solve and the patients get well timed up to date. patients can eBook appointment from everywhere each time and it will save sufferer's valuable time.

INTRODUCTION

1.1 INTRODUCTION OF THE PROJECT

(Doctor's Appointment)

Device needs to shop facts about new entry of health practitioner and sufferers. function desires to help the internal group of workers to hold information of appointment and locate them as in keeping with severe queries. necessities need to keep excellent file. system want to hold the report of patient. all the systems need to replace and delete the file. It additionally needs a protection device to prevent records. Useful search vicinity is also required.

The system allows secretary to look appointment statistics of the sufferers. The tool lets in secretary to present, cancel or update appointment. The device lets in clinical doctors to peer their sufferers' appointments and see their weekly time table. The device permits docs to decide the popularity of the treatment and can take notes approximately the remedy. The system permits patients to search around and consider medical doctors profiles.

In these future enhancements here we are declaring that this project is to be enhanced in the future with the advance technology and advance services provided to the user and it will be the next version of this project and where all the verifications and testing all the process are given in the documents that will give the advance framework and it will be faster than this and the system testing is also accomplished with the help of the testing advance system and the group of enhancements that make my project more fulfilment and the growth of this project makes all the insufficient material in the advance technology and gives the relevant data to the database and it will fetch all the record stores in the database . All over this will make the project advance and basic purpose of this project makes the relevant data and no error or system requirements make all the plans gives to the user and make the relevant and sufficient data this will make all over performance and running time of the project and it will also support all the operating system.

LITERATURE REVIEW

Paper Title	Publication	Review
Application of Intelligent Agents in Hospital Appointment Scheduling System.	International Journal of Computer Theory and Engineering (IJCTE) Vol.4 August 2012	In this paper we came to know about patients can only take appointment within 24hrs. Citizen is given preferences to book the appointment within 2-4 hrs. FCFS pattern will be applied.
Android Application for Doctor Appointment.	International Journal of Innovative Research in Computer and Communication Engineering (IJIRCCCE) Vol. 2 January 2014	In this paper we came to know about that patient can interact doctor virtually. And resolve queries with consulting online.
Enhancing Patient Appointments Scheduling that Uses Mobile Technology	International Journal of computer Science and Info Security (IJCSIS) Vol. 13 November 2015	In this paper we came to know about priority is given to patients with emergency. Patients receive alert for appointment.

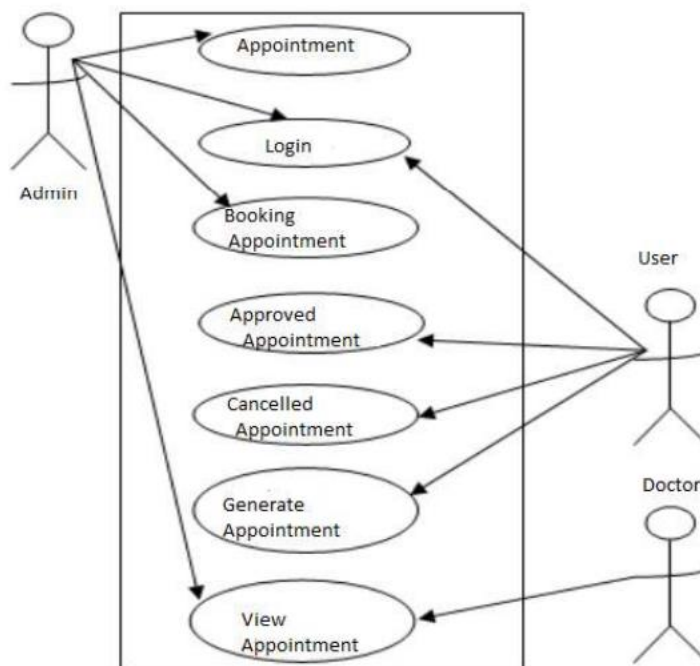
SYSTEM ARCHITECTURE

In this segment, a logical system that meets the requirements is set up. The software development layout section offers with transforming patron wishes right into a logically functioning system. construction is normally completed in steps:

1. primary construction degree: At this stage, the device is constructed in the block degree. The block is created primarily based at the evaluation accomplished at the problem detection segment. Separate blocks are created for special abilities with an emphasis on minimizing the float of statistics between blocks. consequently, all sports that require more interplay are stored in a unmarried block.
2. Secondary layout segment: within the secondary level, the impartial layout of every block is finished.

The general duties blanketed by means of the format technique are:

1. design a massive wide variety of blocks for the overall device method.
2. Lay out smaller, extra impact and possible modules in every block.
3. format of diverse database Table.
4. offers data approximately the program to gain the concern feature.
5. layout the shape of the enter and output of the system.
6. file your layout.



DESIGN PROCESS**An Introduction to Design**

I followed the concept of Design Thinking: Empathize, Define, Ideate, Prototype and Test.

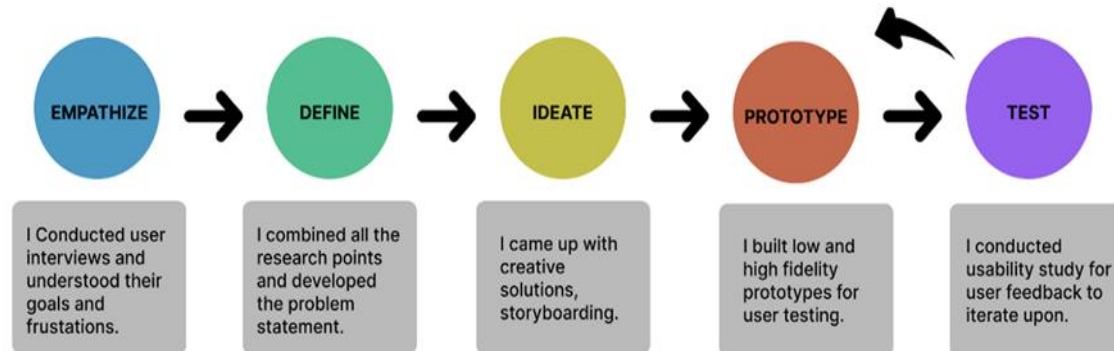


Fig. 1.2 Concept Of Design

4.3 Pain Points**(Patient)**

- Patients find it difficult to find a good doctor or hospital.
- Patients who are busy with their work find it hard to book an appointment instantly.
- Need to wait in longer queues.
- Sometimes when they are not able to commute for some reason, they are not able to consult doctors online.

The following steps are some of pointers for designing your person interface.

1. Machine users should constantly recognize what to do next.
2. The screen must be formatted so that a couple of varieties of statistics, commands, and messages usually appear inside the identical fashion display area.
3. Messages, instructions, or data have to be displayed lengthy sufficient for the device consumer to read.
4. Use the show characteristic with warning.
5. You need to specify the fields you input and the default values for the solution.
6. One should now not be allowed to maintain with out correcting the error.
7. under no circumstances ought to device users obtain walking machine messages or deadly mistakes.

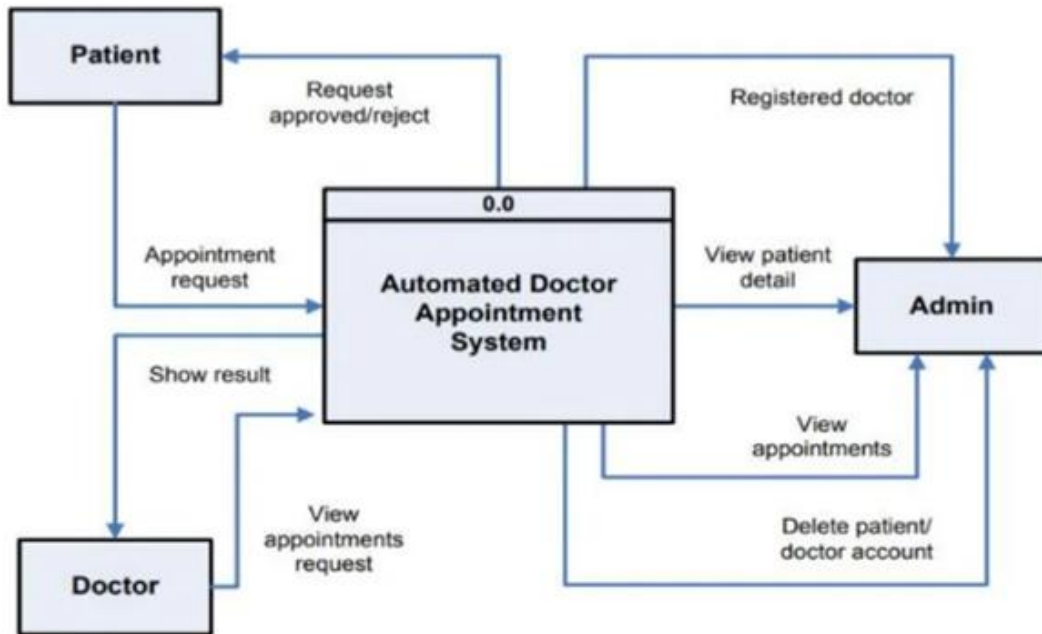
PROPOSED SYSTEM

The purpose of the proposed device is to extend the device with advanced features. The proposed gadget can overcome all the barriers of the specified gadget. Gadgets provide adequate security and reduce manual painting.

- Information security.
- Pay attention to the truth.
- Better proper management of officers.
- Reduce key fact entries.
- Minimum time required for various processes.
- More power.
- A better provider.
- Personal and interactive.
- Minimum time required.

The control engine database that is entirely version Institute. various famous dataset in work these days has primarily versions. because the Nineteen Eighties, RDBMSs have turn out to be the primary desire for storing statistics and logistics dataset, employee records, it is less complex to understand and use, and often replace older hierarchical or network databases. however, relational databases had been challenged via the usage of item databases delivered to address item-relational impedance mismatches among relational and XML databases. Patron interface design offers with conversations between the person and the laptop. it is all approximately booting the device, logging in to devices, and eventually providing preferred inputs and outcome. the all over collection of shows and output is known as a conversation.

CONTEXT DIAGRAM



IMPLEMENTATION

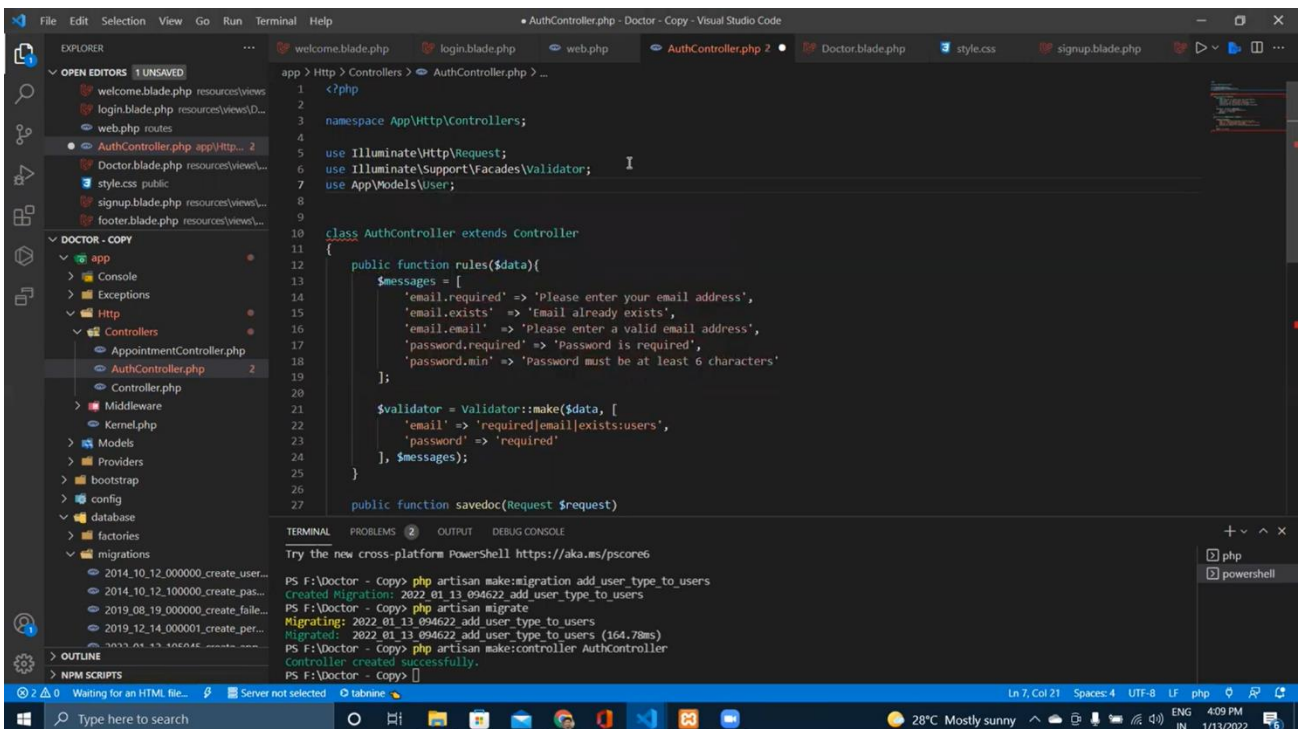
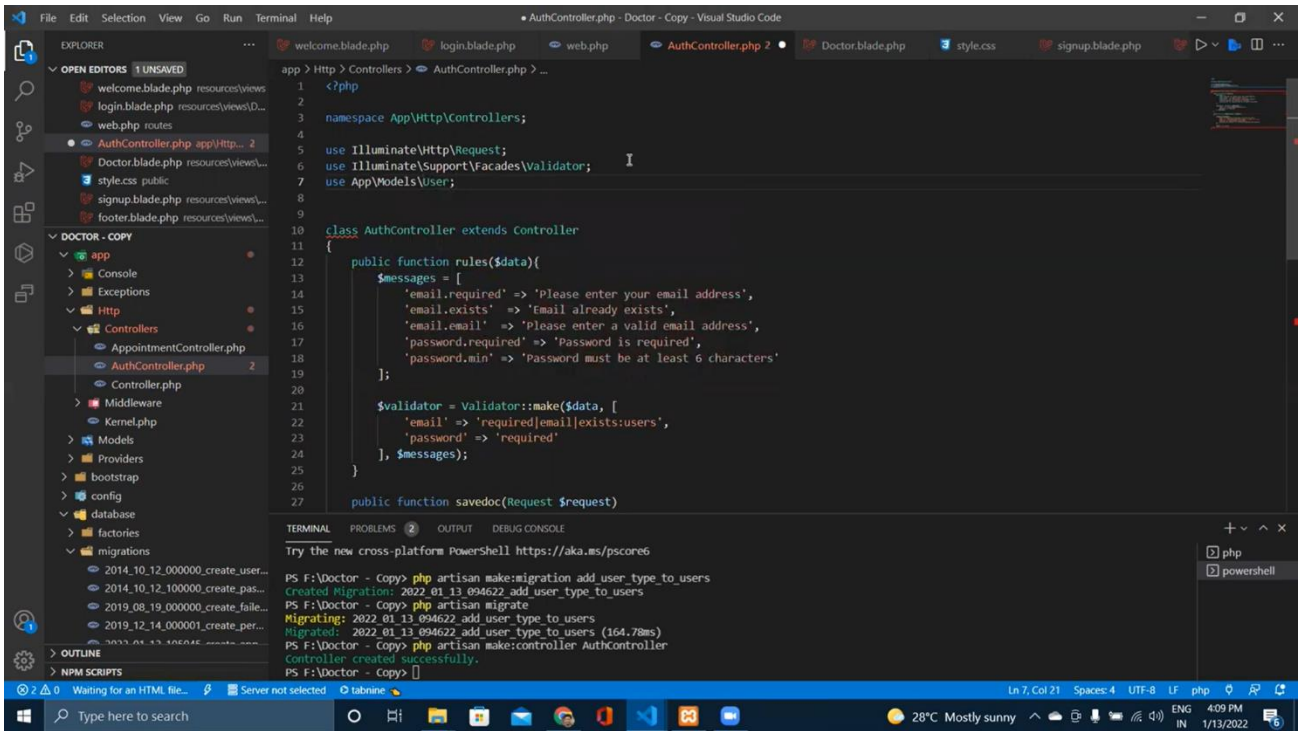
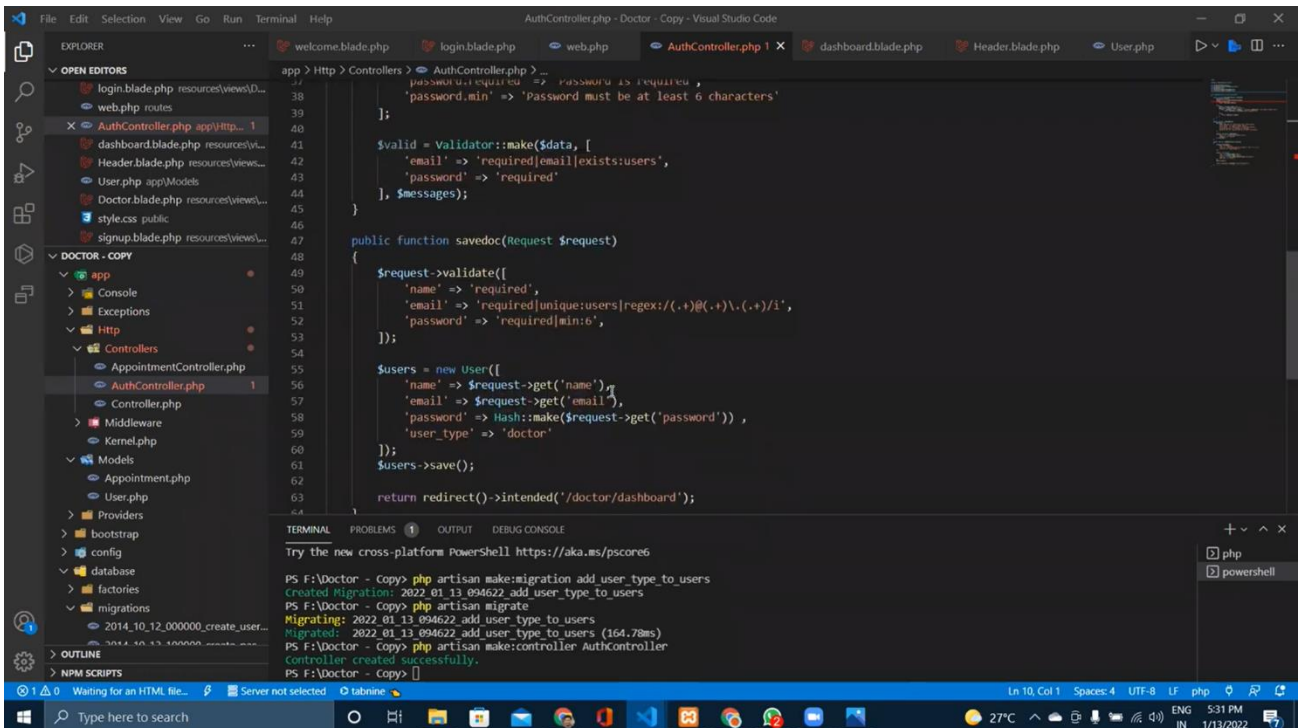


Fig. 2.1 Implementation Screenshot



```
app > Http > Controllers > AuthController.php > ...
1 <?php
2
3 namespace App\Http\Controllers;
4
5 use Illuminate\Http\Request;
6 use Illuminate\Support\Facades\Validator;
7 use App\Models\User;
8
9
10 class AuthController extends Controller
11 {
12     public function rules($data){
13         $messages = [
14             'email.required' => 'Please enter your email address',
15             'email.exists' => 'Email already exists',
16             'email.email' => 'Please enter a valid email address',
17             'password.required' => 'Password is required',
18             'password.min' => 'Password must be at least 6 characters'
19         ];
20     }
21
22     $validator = Validator::make($data, [
23         'email' => 'required|email|exists:users',
24         'password' => 'required'
25     ], $messages);
26
27     public function savedoc(Request $request)
```

```
PS F:\Doctor - Copy> php artisan make:migration add_user_type_to_users
Created Migration: 2022_01_13_094622_add_user_type_to_users
PS F:\Doctor - Copy> php artisan migrate
Migrating: 2022_01_13_094622_add_user_type_to_users
Migrated: 2022_01_13_094622_add_user_type_to_users (164.78ms)
PS F:\Doctor - Copy> php artisan make:controller AuthController
Controller created successfully.
PS F:\Doctor - Copy>
```



```
app > Http > Controllers > AuthController.php > ...
37     'password.min' => 'Password must be at least 6 characters'
38     ];
39 }
40
41 $valid = Validator::make($data, [
42     'email' => 'required|email|exists:users',
43     'password' => 'required'
44 ], $messages);
45
46 public function savedoc(Request $request)
47 {
48     $request->validate([
49         'name' => 'required',
50         'email' => 'required|unique:users|regex:/((.+)\.(.+)\.(.+))/i',
51         'password' => 'required|min:6',
52     ]);
53
54     $users = new User([
55         'name' => $request->get('name'),
56         'email' => $request->get('email'),
57         'password' => Hash::make($request->get('password')),
58         'user_type' => 'doctor'
59     ]);
60     $users->save();
61
62     return redirect()->intended('/doctor/dashboard');
```

```
PS F:\Doctor - Copy> php artisan make:migration add_user_type_to_users
Created Migration: 2022_01_13_094622_add_user_type_to_users
PS F:\Doctor - Copy> php artisan migrate
Migrating: 2022_01_13_094622_add_user_type_to_users
Migrated: 2022_01_13_094622_add_user_type_to_users (164.78ms)
PS F:\Doctor - Copy> php artisan make:controller AuthController
Controller created successfully.
PS F:\Doctor - Copy>
```

Fig. 2.2 Implementation Screenshot



CONCLUSION

Our company is most effective with modest challenges to satisfy their desire to manipulate their work. It has also passed a large number of consumer-friendly coding. This package deal must show to be a effective common bundle that satisfactorily meets all college necessities. The aim of the software program plan is to offer frame painting that permits managers to make lower priced estimates on the start of a software undertaking inside a restrained time frame and desires to be up to date regularly as the challenge progresses.

An explanation of the heritage and background of the task and its relationship to work already being done nearby.

- Declaration of goals and objectives for the challenge.
- A description of motivation, scope, and applicability.
- Gives an overview of the issues you are working on within the task.

REFERENCES

1. <https://laravel.com/docs/9.x/installation>
2. <https://www.w3schools.com/>
3. <https://bootstrap.com/>
4. <https://xampp.en.uptodown.com/windows>
5. <https://www.apachefriends.org/>
6. <https://developer.mozilla.org/>