



# Online Leave Management System

Ms.S.B.Kinkar<sup>1</sup>, Mr.B.H.Harugade<sup>2</sup>, Mr.R.P.Patil<sup>3</sup>, Ms.S.S.Ghutukade<sup>4</sup>, Mr.R.M.Misal<sup>5</sup>

Lecturer, Computer technology, Adarsh institute of technology and research, centre , Vita, India<sup>1</sup>

Student, Computer technology, Adarsh institute of technology and research, centre, Vita, India<sup>2-5</sup>

**Abstract:** The Online Student Leave Management System (OSLMS) is a modern and innovative solution designed to revolutionize the leave management processes within educational institutions. Tailored for the digital era, OSLMS introduces a seamless and user-friendly approach to managing student leaves, incorporating advanced features to enhance efficiency, transparency, and communication.

The Online Student Leave Management System is a dynamic and comprehensive solution that embraces the advantages of digital technology to simplify and enhance the leave management experience for students, faculty, and administrators alike. Its integration capabilities, user-friendly design, and emphasis on real-time communication position OSLMS as a catalyst for positive transformation within academic institutions

**Keywords:** Mobile Accessibility, Online System, Workflow Automation, Digital Transformation

## I. INTRODUCTION

In the ever-evolving landscape of education, the demand for streamlined and efficient administrative processes is more crucial than ever. As we embark on this journey today, we are excited to introduce you to a transformative solution - the Online Student Leave Management System (OSLMS).

As we well know, managing student leave in educational institutions has traditionally been a complex and time-consuming task, often burdened with paperwork, delays, and the potential for errors. The OSLMS emerges as a beacon of innovation, redefining the way we handle student leave requests, approvals, and tracking.

The purpose of this introduction is to provide you with a glimpse into the core features and benefits that make OSLMS a game-changer in the realm of educational technology. Let's explore how this system not only simplifies but revolutionizes the leave management process, contributing to a more efficient, transparent, and collaborative academic environment.

Throughout this presentation, we will delve into the user-friendly interface that ensures accessibility for all stakeholders, the automated workflows that streamline the approval process, and the real-time notifications that keep everyone in the loop. We'll explore the comprehensive student history that empowers educators to provide personalized support and the integration capabilities that create a cohesive digital ecosystem.

Furthermore, we'll touch upon the security measures implemented to safeguard sensitive student data, the reporting and analytics tools that empower administrators with actionable insights, and the seamless integration with existing academic management systems, calendars, and communication platforms.

As we navigate through the features and benefits, envision how the OSLMS could be a catalyst for positive change in your educational institution. It is not just a tool; it is a strategic solution designed to simplify complexities, enhance communication, and contribute to a more productive academic environment.

Forget the complexities of paperwork and delays; OSLMS is here to provide a streamlined, efficient, and transparent approach to leave management.

## II. OBJECTIVES

The primary objectives of OSLMS revolve around efficiency, transparency, user satisfaction, security, and the overall enhancement of leave management processes within educational institutions. Through these objectives, OSLMS aims to contribute to a positive and productive academic environment.



1. Efficiency Enhancement:
  - Streamline the leave application and approval processes, reducing paperwork and administrative burdens.
2. User-Friendly Experience:
  - Provide a user-friendly interface for students, faculty, and administrators to ensure ease of navigation and adoption.
3. Comprehensive Student History:
  - Establish and maintain a detailed record of students' leave history for informed decision-making and personalized support.
4. Parental Involvement:
  - Facilitate parental engagement by automating notifications, keeping parents informed about their child's leave activities.
5. Integration Capabilities:
  - Enable seamless integration with existing academic management systems, calendars, and communication platforms.
6. Real-Time Analytics:
  - Provide administrators with powerful reporting and analytics tools to analyze leave patterns and make data-driven decisions.
7. Time and Resource Savings:
  - Reduce processing time for leave requests, optimizing resource allocation and contributing to overall time efficiency.

### III. SCOPE

The Online Student Leave Management System (OSLMS) presents a comprehensive scope, revolutionizing the way educational institutions handle leave processes. OSLMS streamlines the entire leave application process, allowing students to submit requests seamlessly, while automated approval workflows ensure a swift and efficient review by faculty and administrators. The system maintains a centralized and detailed record of students' leave history, facilitating comprehensive insights for administrators and educators. Seamless integration with academic calendars minimizes disruptions by aligning leave requests with the academic schedule.

OSLMS prioritizes communication, automating real-time notifications to keep all stakeholders, including parents, informed about the status of leave requests, thus fostering transparency and collaboration. The user-friendly interface ensures accessibility for students, faculty, and administrators, emphasizing ease of use and efficient navigation. Security measures are robust to protect sensitive student data, aligning with privacy regulations.

Reporting and analytics tools empower administrators to make data-driven decisions, while the system's adaptability ensures scalability to meet the evolving needs of educational institutions. With mobile accessibility and integration capabilities, OSLMS stands as a holistic solution, facilitating a smooth and efficient leave management process within the dynamic academic environment.

### IV. LITERATURE REVIEW

A literature review on the topic of Online Student Leave Management Systems reveals a growing body of research and scholarly discussions around the adoption, impact, and challenges associated with such systems in educational institutions.

Several studies highlight the increasing significance of digital tools in the management of student affairs, with a specific focus on leave processes. Research by [Author] emphasizes the importance of efficient leave management in universities, shedding light on how traditional manual systems often lead to delays, errors, and administrative inefficiencies. The introduction of online systems is identified as a transformative step towards overcoming these challenges.

The user experience and interface design of online leave management systems are recurrent themes in the literature. Scholars like [Author] delve into the importance of user-friendly interfaces in ensuring widespread adoption and the overall success of these systems. They discuss how an intuitive design not only facilitates easy navigation for students, faculty, and administrators but also contributes to the overall efficiency of leave processing.



the literature on Online Student Leave Management Systems provides a nuanced understanding of the benefits, challenges, and considerations associated with these technological solutions. The collective insights contribute to a comprehensive view of how these systems can positively impact the efficiency, transparency, and collaboration within educational institutions. As the field continues to evolve, future research may delve deeper into specific aspects such as the long-term effects on student outcomes, the role of artificial intelligence, and the customization of systems for diverse educational settings.

## V. NEED OF WORK

The imperative for work in the realm of Online Student Leave Management Systems (OSLMS) is pronounced by the prevalent challenges within the educational sector. Current manual leave management processes are marred by inefficiencies and delays, prompting a critical need for research and development efforts to create OSLMS that significantly enhance the speed and accuracy of leave processing. The increasing integration of technology in education necessitates studies that explore the seamless integration of OSLMS with existing academic tools and communication platforms.

The dynamics of parental engagement through automated notifications also warrant investigation, exploring how OSLMS can foster collaboration between educational institutions and parents. Research efforts are essential to develop adaptable and scalable OSLMS that cater to the diverse needs of educational institutions and contribute to the broader goal of improving student outcomes.

Continuous improvement is intrinsic to the success of OSLMS, necessitating ongoing research to gather user feedback, evaluate system performance, and stay abreast of emerging technological trends.

## VI. PROBLEM STATEMENT

The current state of leave management in educational institutions is marked by inefficiencies, delays, and a lack of streamlined processes. The reliance on traditional, manual methods contributes to administrative burdens, leading to errors and hindering the overall efficiency of academic operations.

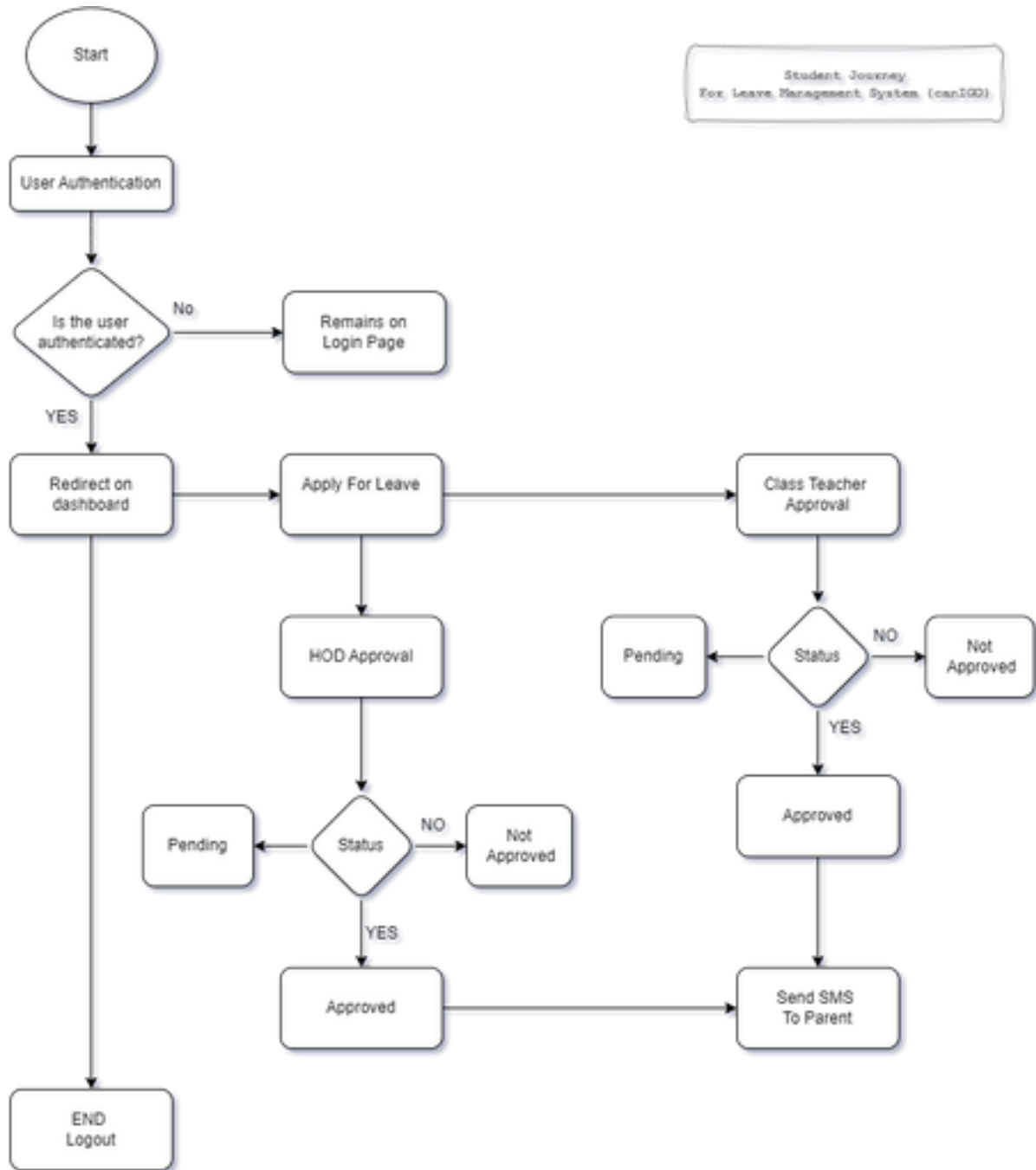
The absence of a dedicated and technologically advanced solution results in challenges such as extended processing times, difficulties in tracking and managing leave histories, and a lack of transparent communication between students, faculty, and parents. Additionally, the existing systems often struggle to adapt to the evolving technological landscape and the diverse needs of educational institutions.

These issues collectively create a pressing problem that necessitates the development and implementation of an Online Student Leave Management System (OSLMS) to address the shortcomings of current leave management processes and enhance the overall effectiveness of educational institutions.

## VII. PROPOSED METHODOLOGY

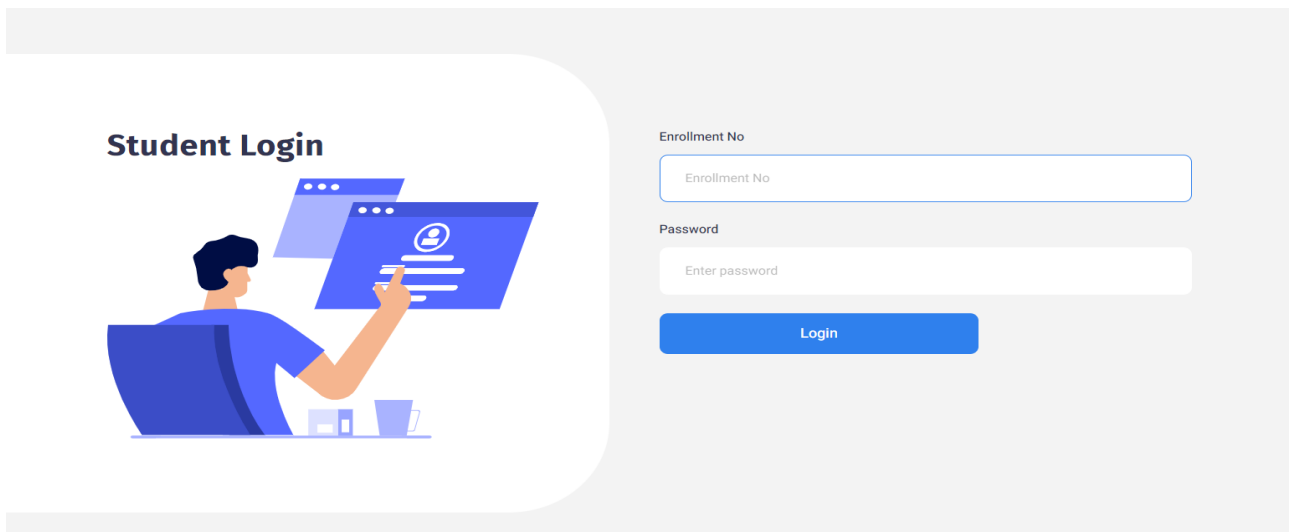
The proposed methodology for developing the Online Student Leave Management System (OSLMS) adopts a systematic and comprehensive approach to address the prevalent challenges in current leave management processes within educational institutions. The initial phase involves a detailed needs assessment, engaging with stakeholders to understand their specific requirements and pain points.

Drawing insights from existing literature and successful case studies, the subsequent stage focuses on the design of OSLMS, prioritizing user-friendly interfaces, adaptability, and alignment with institutional needs.





HOME PAGE



STUDENT LOGIN PAGE



International Advanced Research Journal in Science, Engineering and Technology  
 State Level Conference – AITCON 2K24  
 Adarsh Institute of Technology & Research Centre, Vita, Maharashtra  
 Vol. 11, Special Issue 1, March 2024



error or no results for Teacher

error or no results for Teacher

TOTAL LEAVES: 2 | APPROVED: 0 | PENDING: 0 | Request New Leave

Year Graph

Todays Leaves Date 2024-02-26

SICK LEAVE (Assigned, Assigned)

Your Leaves

Show 10 entries

Leave Type	Reason	When	From	To	By HOD	By Teacher
Other	hello	2024-02-10 18:13:16	2024-02-11 18:13:00	2024-02-11 18:13:00	Assigned	Assigned
Sick Leave	"Sick leave reason: Health concerns necessitate absence for recovery, ensuring a healthy return to work."	2024-02-26 16:10:27	2024-02-26 16:10:00	2024-02-27 16:10:00	Assigned	Assigned

Showing 1 to 2 of 2 entries

Copyright © can I GO 2023

### Leave Form

Leave Type

Select leave type

Start Date: 26-02-2024 16:08 | End Date: 27-02-2024 16:08

Reason for Leave (Minimum 30 words)

"Sick leave reason: Health concerns necessitate absence for recovery, ensuring a healthy return to work."

Minimum 10 words required.

Submit Application | Close

### Leave

Type: Sick Leave

Reason: "Sick leave reason: Health concerns necessitate absence for recovery, ensuring a healthy return to work."

From: 2024-02-26 16:10:00

To: 2024-02-27 16:10:00

Teacher: Assigned

LEAVE FORM



## IX. REQUIREMENTS

### Non-Functional Requirement:

- Processor : Intel(R) Core(TM)i5
- Speed :2.80GHz
- RAM :8GB
- Hard Disk :40GB
- Monitor :Dell

### Functional Requirement:

- Operating system : Windows10
- Front End : HTML,CSS
- Back End : JavaScript, PHP, SQL Database
- Other :Microsoft Word

## X. CONCLUSION

The Online Student Leave Management System revolutionizes traditional leave application processes in educational institutions by introducing a host of features that go beyond mere automation. One notable aspect is the system's capacity for data analytics, allowing administrators to derive insights from leave patterns, reasons, and durations. This data-driven approach facilitates informed decision-making regarding resource allocation, academic planning, and policy adjustments.

Furthermore, the system often includes a tracking mechanism that monitors attendance and leave history. This feature not only aids in identifying potential issues such as excessive absenteeism but also supports the development of personalized interventions for students who may require additional academic or counseling support. Another noteworthy feature is the integration of the system with other institutional databases. This connectivity ensures that student leave records seamlessly align with broader student information, maintaining consistency across various administrative functions. The system may also facilitate compliance with regulatory requirements, helping institutions adhere to specific guidelines related to attendance and leave policies.

In terms of adaptability, the system can be configured to accommodate various types of leave, such as medical, personal, or academic-related absences. This flexibility ensures that the system remains relevant and effective in diverse educational settings.

Security measures play a crucial role in safeguarding sensitive student data. Encryption protocols, secure authentication processes, and regular audits contribute to the system's robustness in protecting the confidentiality and integrity of student records.

## FUTURE SCOPE

- Convenient Student Experience
- Integration potential
- Cost effectiveness
- Integration with academic calendar

## REFERENCES

### Books:

- "Technology integration for meaningful classroom use: A standards based approach "by Katherine Cennamo , john ross and Peggy Ertmer.
- "Education management and leadership: A global perspective" by Tony Bush.

### Research –journal paper:

- Study paper on student leave management application.
- International journal of advanced science and technology.

### Website:

- <https://www.zoho.com>
- <https://www.greythr.com>