



SMART MOBILE FRIENDLY SKIN HEALTH DIAGNOSIS APPLICATION

Dhanalakshmi. S¹, Dr. R. Praba²

Student, B. Sc. Information Technology, Dr. N.G.P Arts and Science College, Coimbatore, Tamil-Nadu, India¹

Associate Professor, B. Sc. Information Technology, Dr. N.G.P Arts and Science College, Coimbatore, Tamil-Nadu, India²

Abstract: Skin diseases are among the most common health concerns worldwide, yet early diagnosis and access to dermatological care remain limited, especially in remote and underserved regions. This project presents an intelligent, mobile-friendly skin health diagnosis application designed to provide quick and accessible preliminary analysis of common skin conditions. The system leverages artificial intelligence and computer vision techniques to analyse user-provided skin images and symptoms, enabling automated detection and classification of various dermatological issues. The application is built using Python-based frameworks and integrates deep learning models trained on dermatological image datasets to ensure reliable prediction accuracy. In addition to image-based diagnosis, the system provides symptom-based suggestions, precautionary measures, and basic remedies to guide users toward informed healthcare decisions. The mobile responsive design ensures seamless accessibility across smartphones and tablets, enhancing usability and real-time interaction. Furthermore, the platform incorporates a secure user interface, fast processing, and scalable deployment using lightweight web technologies, making it suitable for both personal and clinical assistance. By combining AI-driven diagnosis with a mobile friendly interface, the proposed system aims to bridge the gap between technology and accessible skincare awareness. Future enhancements may include integration with telemedicine services, real-time dermatologist consultation, multilingual support, and continuous model improvement using larger medical datasets.

Keywords: Skin Disease Detection, Mobile Health (mHealth), Deep Learning, Convolutional Neural Network (CNN), Mobile Net, Image Processing, Telemedicine, AI-Based Diagnosis Net, Image Processing, Telemedicine, AI-Based Diagnosis.

I. INTRODUCTION

Skin diseases such as acne, eczema, psoriasis, and melanoma affect millions of people globally. Traditional diagnosis requires clinical examination by dermatologists, which may not always be accessible, especially in rural areas. With the advancement of artificial intelligence and smartphone technology, mobile health applications have become an effective solution for early disease detection. This research proposes a smart mobile-friendly skin diagnosis system that integrates image acquisition, preprocessing, deep learning based classification, and result visualization into a single application. The system aims to provide fast, reliable, and user-friendly skin disease prediction.

1.2. LITERATURE REVIEW

Skin diseases are one of the most common health problems worldwide, and early diagnosis is important to prevent serious complications. In recent years, researchers have explored the use of **Artificial Intelligence (AI)** and **Machine Learning (ML)** techniques to automatically detect skin diseases using medical images. Many studies focus on developing mobile-based systems that allow users to capture images of skin conditions and receive preliminary diagnostic results. Several researchers have proposed **Convolutional Neural Network (CNN)** b

II. SYSTEM ARCHITECTURE

The proposed smart mobile-friendly skin health diagnosis system is designed to provide users with an easy and accessible way to detect common skin conditions using their smartphones. The system combines mobile imaging, deep learning, and cloud or on-device processing to analyse skin abnormalities efficiently. At its core, the application uses a Convolutional Neural Network (CNN) model trained on dermatological datasets to recognize patterns in skin textures and colours. The architecture includes modules for image acquisition, preprocessing, feature extraction, classification, and result presentation. The system is designed to be lightweight and mobile-optimized so that users can perform skin analysis anytime without requiring specialized medical equipment.

1. User Interface Layer

- Mobile-friendly application (Android / Flutter)
- Image capture & upload option • Displays prediction results and precautions

2. Image Acquisition Layer

- Captures skin image via smartphone camera
- Sends image to preprocessing module

3. Preprocessing Layer

- Image resizing (e.g., 224×224)
- Noise removal & normalization • Contrast enhancement

4. Deep Learning Model Layer

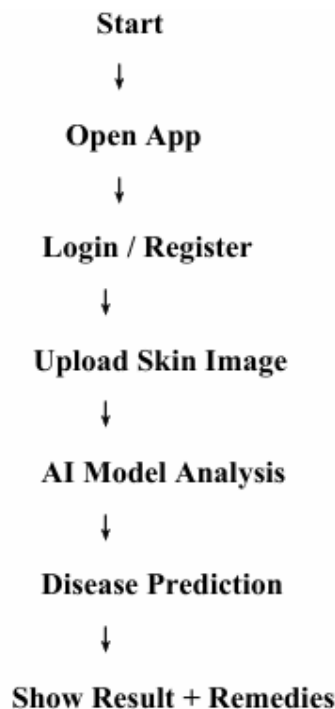
- Convolutional Neural Network (CNN / Mobile Net)
- Feature extraction (texture, colour, lesion patterns)
- Classification using SoftMax layer

5. Prediction & Analysis Layer

- Generates disease probability scores

6. Result & Recommendation Layer

- Determines most likely skin condition
- Displays disease name • Shows confidence percentage
- Provides precautionary advice • Suggests dermatologist consultation

III. WORKFLOW CHART**IV. METHODOLOGY**

System Overview The proposed smart mobile-friendly skin health diagnosis application is developed as a web-based system that integrates deep learning, multimodal analysis, and real-time user interaction. The system allows users to analyse skin conditions using text descriptions, skin images, or a combination of both. The architecture is built using a Flask backend, deep learning models implemented in Torch, and a mobile-friendly web interface. The application supports authentication, prediction tracking, and AI-generated remedy suggestions to provide a complete dermatological assistance platform

1. User Authentication and Data Management

The system includes a secure login and registration module to maintain personalized health records

1. User credentials are stored using password hashing for security. A relational database (SQLite) is used to store:
2. User profiles
3. Prediction history
4. Confidence scores
5. Uploaded skin images This enables users to track previous diagnoses and supports long-term monitoring of skin conditions

2. Multimodal Input Acquisition

Unlike traditional systems that rely only on images, the proposed system supports three input modes:

1. Text-only input – Users describe symptoms (e.g., itching, redness).
2. Image-only input – Users upload a skin photo.
3. Multimodal input – Combines text and image for higher accuracy.

This multimodal design improves diagnostic reliability and mimics real-world dermatology consultations.

3. Image Preprocessing

Uploaded skin images undergo preprocessing before inference. The preprocessing pipeline includes:

1. Image resizing to
2. RGB conversion
3. Tensor transformation
4. Normalization using ImageNet statistics These transformations standardize inputs and improve compatibility with the deep learning model.

4. Text Preprocessing

For textual inputs, natural language preprocessing is performed using a transformer tokenizer. The input text is:

1. Tokenized using a pretrained language model tokenizer
2. Padded and truncated to fixed sequence length
3. Converted into tensor format for model inference This ensures consistent textual representation for classification.

V. RESULT

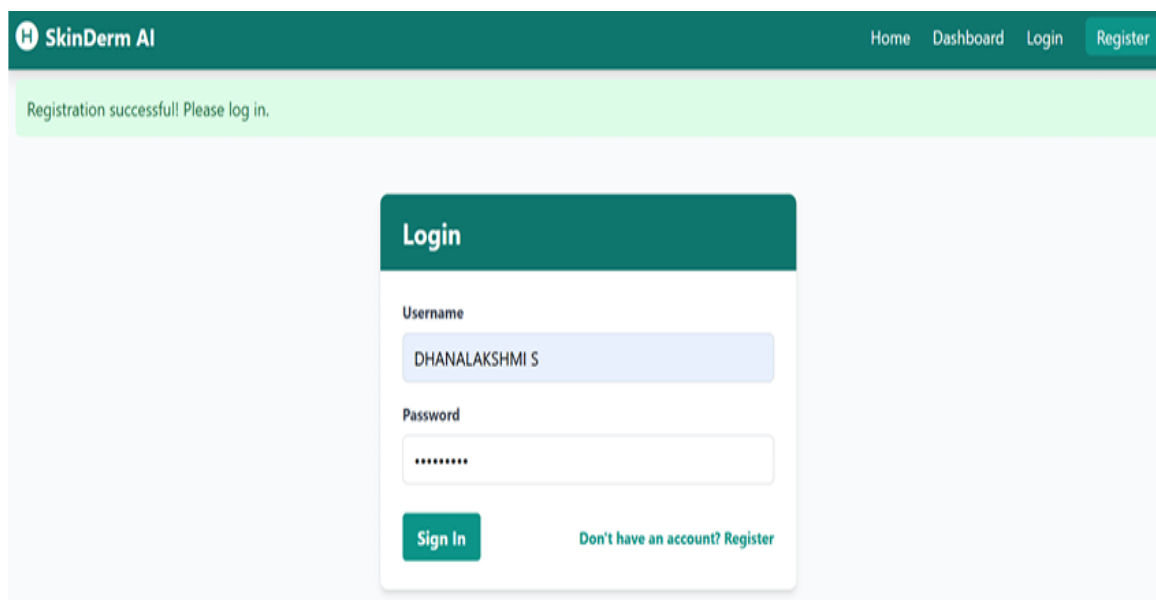


Figure 5.1

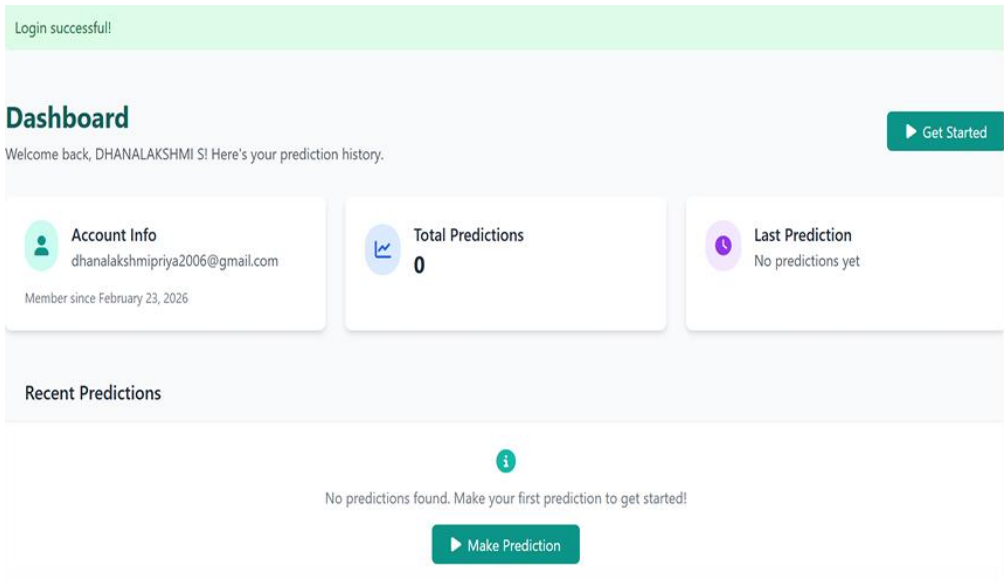


Figure 5.2

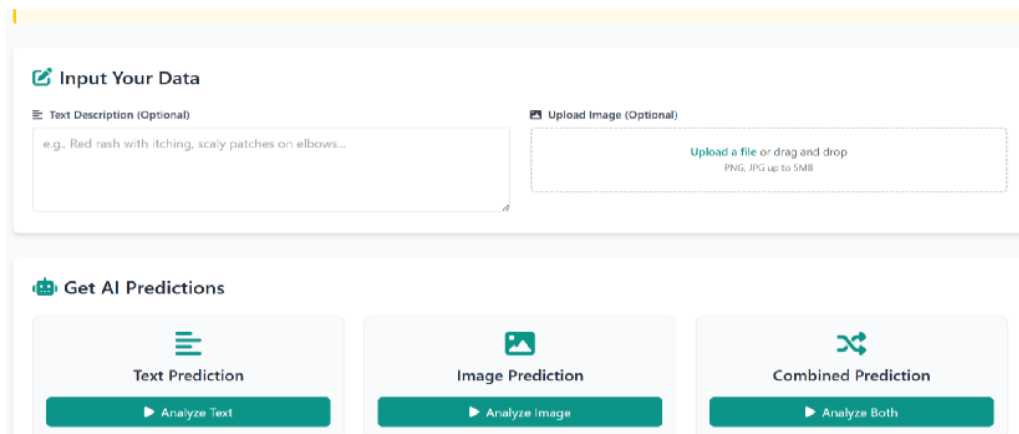


Figure: 5.3

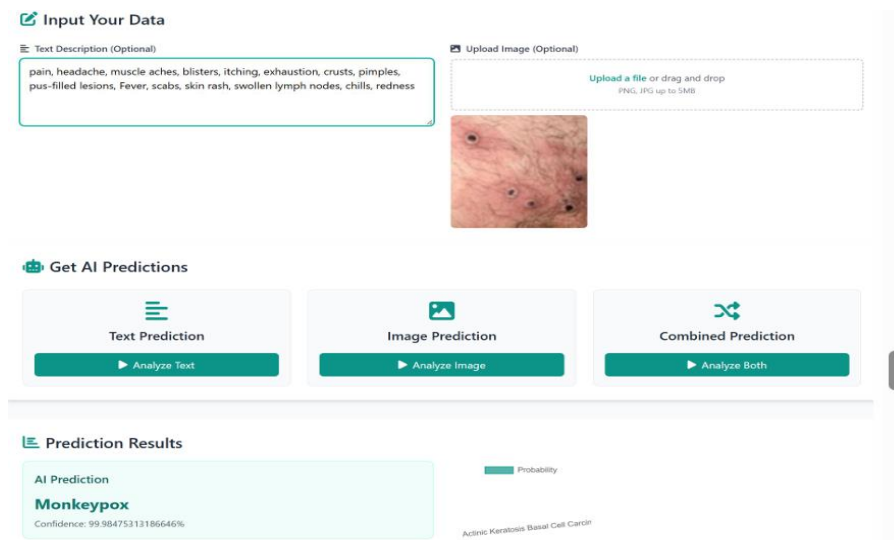


Figure 5.4

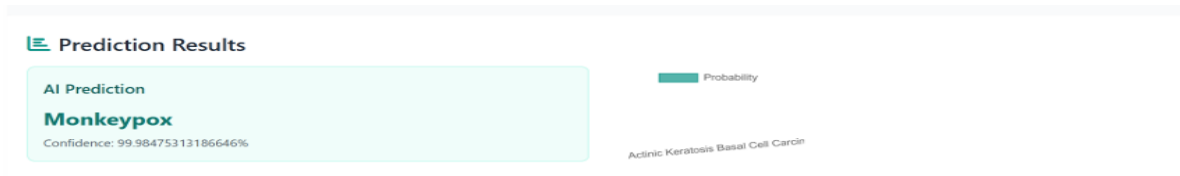


Figure 6.5

Remedy & Medicine Suggestions

****Disclaimer:**** This information is for educational purposes only and is not a substitute for professional medical advice. Always consult with a healthcare provider for diagnosis and treatment of Monkeypox.

****Home Remedy Suggestions:****

- **Soothing Baths:**** Lukewarm baths with colloidal oatmeal or Epsom salts can help relieve itching and discomfort from lesions.
- **Cool Compresses:**** Applying cool, damp cloths to itchy areas can provide temporary relief.
- **Loose-Fitting Clothing:**** Wear soft, breathable fabrics to minimize irritation on affected skin.
- **Hydration:**** Drink plenty of fluids (water, herbal teas) to support your immune system and overall well-being.
- **Rest:**** Adequate rest is crucial for your body to recover.

****Dietary/Lifestyle Changes:****

- **Balanced Diet:**** Focus on a diet rich in fruits, vegetables, and whole grains to support immune function.
- **Avoid Irritants:**** Steer clear of harsh soaps, perfumed lotions, and scratching, which can worsen irritation and increase the risk of secondary infection.

****Potential Over-the-Counter (OTC) Medicine Recommendations (for symptom management):****

- **Pain Relief:****
- **Acetaminophen (Tylenol)**** or ****Ibuprofen (Advil, Motrin)**** can help manage fever and body aches.

Figure 5.5

VI. CHALLENGES AND FUTURE DIRECTIONS

6.1. CHALLENGES

- Image quality may vary due to lighting and camera differences.
- Skin diseases appear differently across skin tones and age groups.
- Limited and imbalanced dermatology datasets affect accuracy.
- Privacy concerns related to sensitive skin images.
- Heavy AI models may slow down mobile performance.
- Cannot fully replace professional dermatologists.

6.2. FUTURE DIRECTIONS

- Use larger and more diverse skin image datasets.
- Develop lightweight AI models for faster mobile performance.
- cloud support for better accuracy.
- Add telemedicine features like live dermatologist consultation.
- Provide personalized skincare recommendations.

VII. CONCLUSION

This study presented a comprehensive approach to air quality prediction using Python-based machine learning and deep learning techniques. By comparing traditional models with advanced architectures, the research demonstrates that ensemble methods such as Random Forest and Extra Trees provide reliable and interpretable performance, while hybrid deep learning models offer improved accuracy in capturing complex temporal pollution patterns. The analysis also highlights key pollutants such as PM_{2.5}, CO, and NO₂ as major contributors to air quality degradation, emphasizing the need for focused monitoring and mitigation strategies. Integrating these predictive models into a user-friendly web application enables real-time AQI forecasting and actionable insights for citizens, healthcare professionals, and policymakers. Overall, the proposed intelligent AQI prediction system bridges the gap between data-driven research and real-world deployment. Future work can enhance the system through attention-based models, real-time IoT sensor integration, multi-modal environmental data, and uncertainty-aware predictions to support smarter urban environmental management and public health protection.

ACKNOWLEDGEMENT

The authors express their sincere gratitude to all researchers, developers, and organizations who have contributed publicly available air quality datasets, machine learning tools, and open-source frameworks that made this study possible. We



acknowledge the support of environmental monitoring agencies and open data platforms that promote research and innovation in air quality prediction and environmental intelligence. We extend our heartfelt thanks to our academic guides, mentors, and faculty members for their continuous guidance, valuable feedback, and encouragement throughout the development of this intelligent air quality prediction system. Their insights greatly helped in shaping the research methodology and practical implementation. Special appreciation is also given to peers and contributors who supported the design and development of the web-based application, enabling the transformation of theoretical models into a real-world, user-friendly solution. Their motivation and support played a vital role in the successful completion of this work.

REFERENCES

- [1]. Shuli Guo, Xiaowei Song & Lina Han, *Computer-Aided Intelligent Diagnosis of Skin Melanoma*, Springer Singapore, 2025.
- [2]. Esraa M. Aled ani & Howard I. Maibach (Eds.), *Applications of Artificial Intelligence in Common Dermatological Diseases*, Springer Cham, 2025.
- [3]. R. Indra kumari, T. Ganesh Kumar, D. Murugan & Sherman P.C. (Eds.), *Deep Learning in Medical Image Analysis: Recent Advances and Future Trends*, Chapman & Hall, 2025.
- [4]. Yen-Wei Chen, Lanfen Lin & Rahul Kumar Jain, *Recent Advances in Deep Learning for Medical Image Analysis: Paradigms and Applications*, Springer Cham, 2025.
- [5]. Akhil Sharma, Shweta Sharma, Shiv kanya Fuloria & Sudhir Kumar (Eds.), *AI and IoT-Enhanced Skin Cancer Detection and Care (Part 1)*, Bentham Books, 2025.