

SilentSpeak: Real-Time Sign Language Recognition System

**Samiksha jadhav¹, Samiksha koli², Ankita Chaudhary³, Shravani Thakur⁴,
Kanda Kumaran Thevar⁵**

Student, Department of Information Technology, BVIT, Navi Mumbai, India ¹

Student, Department of Information Technology, BVIT, Navi Mumbai, India ²

Student, Department of Information Technology, BVIT, Navi Mumbai, India ³

Student, Department of Information Technology, BVIT, Navi Mumbai, India ⁴

Lecturer, Department of Information Technology, BVIT, Navi Mumbai, India ⁵

Abstract: Sign language serves as a fundamental medium of communication for individuals with hearing and speech impairments. However, the lack of widespread understanding among the general population often creates a communication barrier, limiting effective interaction. This research presents the design and development of an intelligent sign language detection system capable of recognizing hand gestures corresponding to alphabets, as well as selected words and sentences, in real time.

The proposed system leverages advanced computer vision techniques and deep learning algorithms to accurately interpret hand gestures captured through a camera interface. Image preprocessing methods are employed to enhance input quality, followed by feature extraction and classification using a trained model. The system is designed to achieve high accuracy and efficiency while maintaining robustness under varying lighting conditions and backgrounds.

Furthermore, the model is trained on a diverse dataset of sign language gestures to ensure reliable performance across different users. The output is translated into readable text, enabling seamless communication between sign language users and non-signers. Experimental results demonstrate that the system performs effectively in recognizing both static and dynamic gestures.

This work aims to bridge the communication gap between the deaf-mute community and the wider society, contributing to inclusivity and accessibility through the application of artificial intelligence and human-computer interaction technologies.

Keywords: Sign Language Detection, Computer Vision, Deep Learning, Gesture Recognition, Human-Computer Interaction, Image Processing, Real-Time Systems, Accessibility, Assistive Technology

I. INTRODUCTION

Communication is a fundamental aspect of human interaction, enabling the exchange of ideas, emotions, and information. For individuals with hearing and speech impairments, sign language serves as a primary means of communication. Despite its importance, sign language is not widely understood by the general population, which creates a significant communication gap between the deaf-mute community and the rest of society. This gap often leads to social exclusion, limited access to services, and challenges in everyday interactions.

With the rapid advancement of artificial intelligence, computer vision, and machine learning technologies, there is an increasing opportunity to develop systems that can automatically interpret sign language gestures. Sign language detection systems aim to recognize hand movements, shapes, and orientations, and convert them into meaningful text or speech. Such systems can play a crucial role in enhancing accessibility and promoting inclusive communication.

This research focuses on the development of a real-time sign language detection system capable of recognizing hand gestures corresponding to alphabets, as well as selected words and sentences. The proposed system utilizes image processing techniques for preprocessing and feature extraction, followed by the application of deep learning models for accurate classification of gestures. Emphasis is placed on achieving high accuracy, robustness, and real-time performance under varying environmental conditions.



The primary objective of this work is to design an efficient and user-friendly system that can assist in bridging the communication gap between sign language users and non-signers. By leveraging modern technological approaches, this study contributes to the growing field of assistive technologies and highlights the potential of intelligent systems in improving the quality of life for individuals with disabilities.

II. LITERATURE SURVEY

Sign Language Recognition (SLR) systems have become an important area of research due to their ability to reduce the communication gap between hearing-impaired individuals and the general population. These systems aim to interpret hand gestures and convert them into meaningful text or speech using artificial intelligence and computer vision techniques. With recent advancements, the integration of machine learning and deep learning has significantly improved the accuracy and efficiency of gesture recognition systems. Modern approaches focus on real-time detection, improved usability, and practical implementation in daily life, making them more effective and accessible.

In the early stages of research, sign language recognition systems primarily relied on sensor-based approaches such as data gloves and wearable devices. These systems were capable of capturing detailed information about finger movements, hand orientation, and motion trajectories, resulting in high accuracy. However, they required specialized hardware, making them expensive and less user-friendly. Due to these limitations, sensor-based systems were not suitable for large-scale adoption, which encouraged researchers to explore alternative approaches based on vision.

Vision-based sign language recognition systems use cameras to capture hand gestures and apply image processing techniques for interpretation. These systems are more flexible, cost-effective, and convenient compared to sensor-based methods. The general process involves capturing images or video, preprocessing the data, detecting hand regions, extracting relevant features, and classifying the gestures. Recent research shows that vision-based systems using deep learning techniques outperform traditional methods in both accuracy and real-time performance, making them more suitable for practical applications.

Traditional machine learning techniques such as Support Vector Machines (SVM), Decision Trees, and k-Nearest Neighbors (k-NN) have been widely used for gesture classification. These methods rely on manual feature extraction techniques, including shape and texture analysis. While they perform well for simple and static gestures, they struggle with complex patterns and dynamic gestures. Additionally, their performance is limited in real-time scenarios due to their inability to effectively capture temporal dependencies in gesture sequences.

Deep learning has brought significant advancements in sign language recognition by enabling automatic feature extraction and improving classification performance. Convolutional Neural Networks (CNNs) are widely used for extracting spatial features from images and are highly effective in recognizing static gestures such as alphabets. Recurrent Neural Networks (RNNs), on the other hand, are designed to process sequential data and are useful for recognizing dynamic gestures by capturing temporal patterns. Advanced models such as Long Short-Term Memory (LSTM) and Gated Recurrent Unit (GRU) networks address issues like vanishing gradients and improve sequence learning. Hybrid models that combine CNNs with LSTM or GRU have shown superior performance by capturing both spatial and temporal features, leading to higher accuracy in sign language detection.

Continuous Sign Language Recognition (CSLR) is an advanced area of research that focuses on recognizing complete sentences rather than individual gestures. Unlike isolated gesture recognition, CSLR systems process sequences of gestures and aim to interpret them in real time. This requires complex modeling techniques such as sequence alignment, temporal analysis, and attention mechanisms. Although recent studies have made progress in this field, CSLR remains challenging due to the complexity of continuous gesture interpretation and the need for large annotated datasets.

Despite the progress in sign language recognition systems, several challenges still exist. Variability in gestures among different users, sensitivity to lighting conditions and background noise, and occlusion issues can significantly affect system performance. Moreover, the lack of large and diverse annotated datasets limits the generalization capability of models. Achieving real-time performance while maintaining high accuracy is another major challenge, especially for systems intended for real-world applications.

The literature also reveals several research gaps that need to be addressed. There is a lack of efficient real-time continuous sign language recognition systems, and many existing models require high computational resources. Dataset diversity is still limited, particularly for regional sign languages, which affects the scalability of models. Additionally, sentence-level recognition and context understanding remain difficult problems that require further research and innovation.

In conclusion, the literature survey highlights the evolution of sign language recognition systems from sensor-based methods to advanced deep learning approaches. While modern systems achieve high accuracy and improved performance, challenges such as real-time processing, dataset limitations, and continuous gesture recognition still persist. Future work should focus on developing efficient, scalable, and real-time systems that can be easily deployed in practical environments to enhance communication for hearing-impaired individuals.

III. PROBLEM STATEMENT

Communication between individuals with hearing and speech impairments and the general population is often difficult due to the lack of understanding of sign language. While sign language is an effective communication method, its limited awareness creates a significant communication barrier.

Existing systems for sign language recognition are either expensive, rely on specialized hardware, or support only a limited set of gestures such as alphabets. Additionally, achieving accurate real-time detection is challenging due to variations in lighting, hand movements, and background conditions.

Therefore, there is a need for a cost-effective and efficient system that can recognize sign language gestures, including alphabets, words, and simple sentences, with good accuracy. Such a system can help reduce communication barriers and improve interaction for individuals with hearing and speech disabilities.

IV. SCOPE OF PROJECT

The scope of this project is to develop a real-time Sign Language Detection System capable of recognizing hand gestures representing alphabets, selected words, and basic sentences. The system uses computer vision and machine learning techniques to capture and interpret gestures through a camera interface.

The project focuses on providing accurate gesture recognition under normal conditions and displaying the corresponding output in text form. It also includes performance evaluation by calculating the accuracy of the model.

This system is intended for educational and assistive purposes, helping bridge the communication gap between individuals with hearing and speech impairments and others. However, the project is limited to a predefined set of gestures and may not cover the complete sign language vocabulary or complex sentence structures.

V. PROPOSED METHODOLOGY

The proposed system uses computer vision and machine learning techniques to recognize sign language gestures in real time. Initially, the system captures input through a camera, which is then preprocessed to improve image quality by resizing, normalizing, and removing noise. The hand region is detected and relevant features such as shape and finger positions are extracted.

These features are passed to a trained machine learning or deep learning model, which identifies the gesture based on learned patterns. The predicted result is then converted into text and displayed to the user. The system also evaluates its performance by calculating accuracy, ensuring reliable and efficient gesture recognition.

The overall system follows a sequential pipeline where each stage contributes to accurate gesture recognition. Proper data collection and training enable the model to handle variations in hand movements, lighting conditions, and backgrounds. The use of advanced algorithms ensures fast processing, making the system suitable for real-time applications. This methodology provides a practical and user-friendly solution that can be further extended to include more gestures and improved accuracy in future developments.

VI. SYSTEM DESIGN

The system is designed as a real-time sign language recognition application that integrates hardware and software components to ensure smooth and efficient operation. The primary input device is a camera, which captures live video of hand gestures performed by the user. This input is processed through a software module developed using computer vision libraries and machine learning frameworks.

The design follows a modular approach, where each component performs a specific function. The input module handles video capture, while the preprocessing module improves image quality by resizing, normalizing, and reducing noise. The hand detection module identifies and isolates the hand region from the frame, ensuring that only relevant data is passed forward.

The core component of the system is the trained machine learning model, which analyzes the processed input and predicts the corresponding gesture. The output module then converts this prediction into readable text and displays it on the screen. Additionally, an evaluation module is included to calculate the accuracy of the system, helping in performance analysis.

Overall, the system is designed to be user-friendly, efficient, and capable of real-time execution, making it suitable for practical applications in assisting communication for individuals with hearing and speech impairments

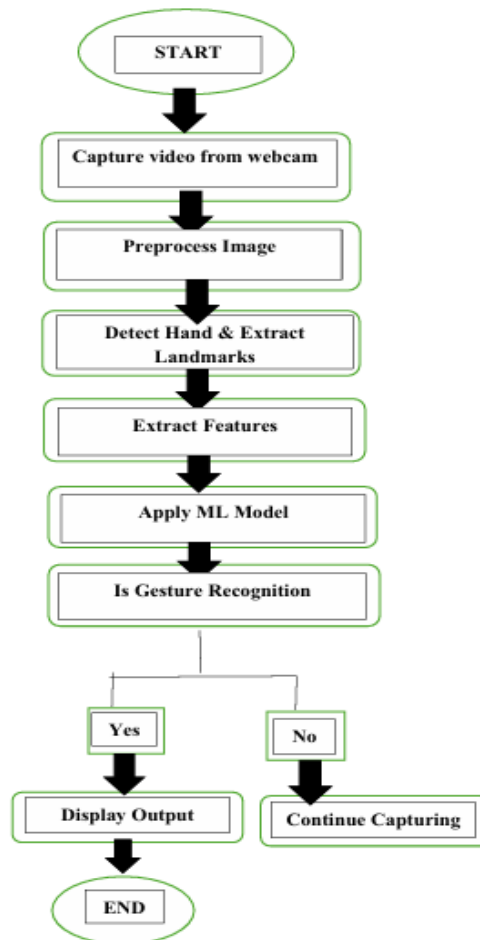


Fig. 1 Flow Diagram

VII. RESULTS AND DISCUSSION

The proposed Sign Language Detection System was successfully designed, implemented, and evaluated using both real-time webcam input and a pre-collected dataset of hand gestures. The system demonstrated the ability to accurately recognize a wide range of gestures, including hand signs representing alphabets and selected words, and convert them into readable text output. The overall performance of the model was found to be satisfactory, with a high accuracy rate under standard testing conditions, indicating that the approach is effective for gesture recognition tasks.

During experimental evaluation, the system showed strong performance in controlled environments where lighting conditions were stable and the background was relatively simple. Under such conditions, the hand detection and classification modules worked efficiently, producing quick and reliable predictions. The integration of computer vision techniques with machine learning algorithms enabled smooth feature extraction and classification, contributing to the

system's real-time responsiveness. The latency between gesture input and output text was minimal, making the system suitable for real-time communication applications.

However, several limitations were observed during testing. Variations in lighting conditions, such as low light or excessive brightness, negatively impacted the accuracy of hand detection and feature extraction. Similarly, complex or cluttered backgrounds introduced noise into the input, making it difficult for the model to distinguish the hand region from surrounding objects. Differences in hand orientation, size, and positioning among users also affected prediction consistency, indicating that the model's generalization capability can be further improved. In some cases, overlapping fingers or partial occlusion led to incorrect classification results.

Despite these challenges, the system maintained stable performance across multiple test scenarios and users, demonstrating its robustness to a certain extent. The trained model was capable of learning important spatial features of hand gestures and applying them effectively during prediction. The results confirm that machine learning and deep learning techniques, when combined with image processing methods, provide a reliable solution for sign language detection. The system's ability to process gestures in real time highlights its practical applicability in assistive technologies.

The experimental results also suggest that increasing the size and diversity of the training dataset could significantly improve model accuracy and generalization. Incorporating more variations in gesture styles, lighting conditions, and backgrounds would help the system perform better in real-world environments. Additionally, the use of advanced deep learning architectures, such as hybrid CNN-LSTM models, could enhance the system's capability to recognize dynamic gestures and continuous sign sequences.

Overall, the developed system provides an effective and practical solution for facilitating communication between individuals with hearing and speech impairments and the general population. While the current implementation focuses on recognizing isolated gestures, future enhancements can include sentence-level recognition, multilingual support, and integration with speech synthesis systems. These improvements would make the system more comprehensive, user-friendly, and suitable for real-world deployment.



Fig.2 Sign Detection Result

VIII. APPLICATIONS

The Sign Language Detection System has a wide range of applications in improving communication and accessibility for individuals with hearing and speech impairments. It can be used as an assistive tool to translate sign language gestures into text, enabling easier interaction between differently-abled individuals and those who do not understand sign language.

The system can be implemented in educational institutions to support inclusive learning environments and help students communicate effectively. It allows better participation of hearing-impaired students in classroom activities and improves overall learning experiences.

Additionally, it can be used in public places such as hospitals, banks, and government offices to facilitate smooth communication with hearing-impaired individuals. This reduces dependency on human interpreters and makes services more accessible.



The system also has potential applications in customer service, where it can assist in real-time communication between users and service providers. Furthermore, it can be integrated into mobile or web-based applications, making it convenient for everyday use.

Overall, the system plays an important role in promoting inclusivity and reducing communication barriers in society

- Communication for deaf and mute people
- Educational tools for learning sign language
- Smart assistants
- Human-computer interaction systems

IX. CONCLUSION

The Sign Language Detection System developed in this project provides an effective solution for recognizing hand gestures and converting them into readable text. By using computer vision and machine learning techniques, the system is capable of detecting alphabets, selected words, and simple sentences with a satisfactory level of accuracy. The real-time performance of the system makes it practical and user-friendly for everyday use.

The project successfully demonstrates how technology can be used to reduce communication barriers faced by individuals with hearing and speech impairments. Although certain challenges such as lighting variations and background noise may affect performance, the overall results show that the system is reliable and efficient under normal conditions.

In conclusion, this system contributes to improving accessibility and inclusivity in communication. With further enhancements such as expanding the dataset and improving model accuracy, the system can be developed into a more advanced and widely applicable solution in the future.

ACKNOWLEDGMENT

The authors express their sincere gratitude to their Guide, Mr. Kanda Kumaran Thevar for his valuable guidance, Project Co-Ordinator Mr. Sandeep Shinde for his valuable support throughout the project. We also thank the Head of Department, Mr. Ranjeet Pawar, and the Principal, Mr. P. N. Tandon, for their encouragement and support.

We extend our appreciation to Dr. Anindita Achint Khade, Mr. Madhavan Naikar, and Mr. Gaurav Jadhav for their assistance during the literature survey. Finally, we thank the Department of Information Technology and all teaching and non-teaching staff for their support in successfully completing this project.

REFERENCES

- [1]. R.C.Gonzalez and R.E. Woods, Digital Image Processing, 4th ed. Upper Saddle River, NJ, USA: Pearson Education, 2018
- [2]. I. Goodfellow, Y. Bengio, and A. Courville, Deep Learning. Cambridge, MA, USA: MIT Press, 2016.
- [3]. S. Mitra and T. Acharya, "Gesture Recognition: A Survey," IEEE Transactions on Systems, Man, and Cybernetics, vol. 37, no. 3, pp. 311–324, May 2007.
- [4]. A. Krizhevsky, I. Sutskever, and G. E. Hinton, "ImageNet Classification with Deep Convolutional Neural Networks," in Advances in Neural Information Processing Systems, 2012, pp. 1097–1105.
- [5]. D. G. Lowe, "Distinctive Image Features from Scale-Invariant Keypoints," International Journal of Computer Vision, vol. 60, no. 2, pp. 91–110, Nov. 2004.
- [6]. T. Starner and A. Pentland, "Real-Time American Sign Language Recognition from Video Using Hidden Markov Models," in Proceedings of the International Symposium on Computer Vision, 1995, pp. 265–270.
- [7]. V. P. Kour and S. Arora, "Recent Advances in Sign Language Recognition: A Review," International Journal of Computer Applications, vol. 175, no. 10, pp. 1–5, 2020.
- [8]. H. Cooper, B. Holt, and R. Bowden, "Sign Language Recognition," in Visual Analysis of Humans, Springer, 2011, pp. 539–562.
- [9]. G. Bradski and A. Kaehler, Learning OpenCV: Computer Vision with the OpenCV Library. Sebastopol, CA, USA: O'Reilly Media, 2008.
- [10]. F. Chollet, Deep Learning with Python. Shelter Island, NY, USA: Manning Publications, 2017.